

EsyBox Pop: maximum pressure, minimum size.

The latest revolution in the EsyBox Line: all of DAB's technology in a new lightweight, compact, all-in-one design.



Compatible with



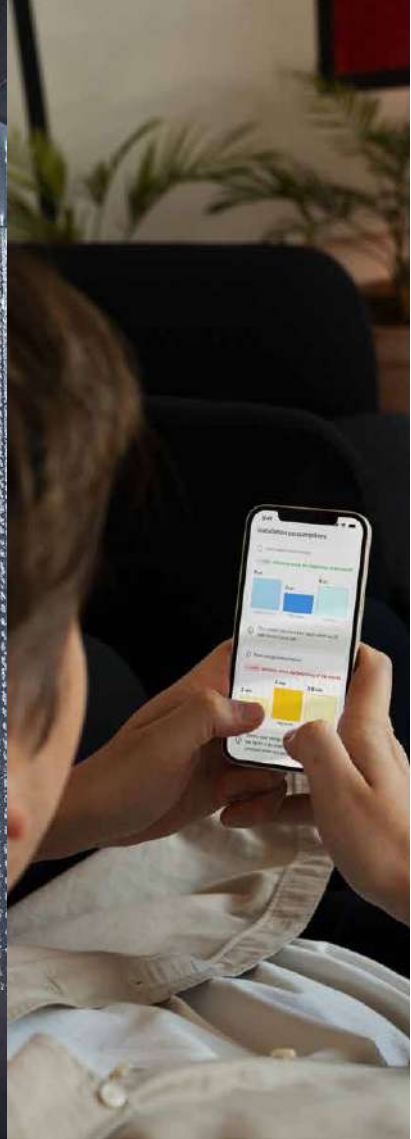


The latest revolution from the EsyBox Line that revolutionized water.

Over 10 years ago, the first EsyBox revolutionized the concept of pressurization systems with a fully integrated electronic solution.

Today EsyBox Line isn't just a product range, it's a whole new experience in water management.

EsyBox Pop is the next step in a truly unique journey.



Perfect pressure

Enjoy water that always flows at your perfect intensity. Even in multiple spots at once, without compromise.



Compact and light

EsyBox Pop looks great, but when needed, it's not afraid of tight spaces, whether it's a garage or a basement.



All-in-one

EsyBox Pop has everything you need to work right out of the box. No components required: simply plug & play. And with its accessories, it easily adapts to your specific needs.



Smart and connected

Set comfort mode, and track consumption: discover how you can even talk directly to your smart pump!



Cutting-edge technology and ease of use

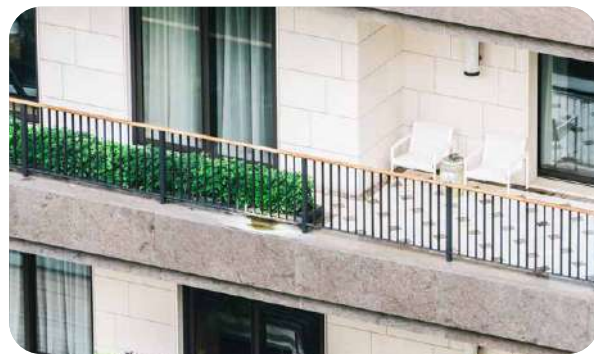
With EsyBox Pop, water flows just as it should: always, wherever you need, and under control, thanks to an all-in-one system that guarantees comfort and simplicity in every home.

Quick installation and effortless management

Installing EsyBox Pop is intuitive, with integrated components and compact dimensions. It saves time and delivers more value to your customers, even the most demanding ones.

The solution **you've been waiting for**

From its compact size to its smart management, EsyBox Pop is designed to simplify every step: from installation to maintenance, including setup and use.



Apartments, even on upper floors

Perfect for apartments, especially on upper floors where water pressure often drops. EsyBox Pop ensures a constant, powerful flow.



Bathroom renovation

With Esybox Pop, next-generation showers reach their full potential. Quick installation, consistent pressure, and easy management make every upgrade more efficient.



Whole-house renovation

A leap forward in comfort and efficiency throughout the home. Integrated technology and smart control ensure consistent performance without compromise.



Areas affected by water rationing

Ensures constant pressure where needed. Ideal for pumping water stored in tanks, with simple and reliable management.



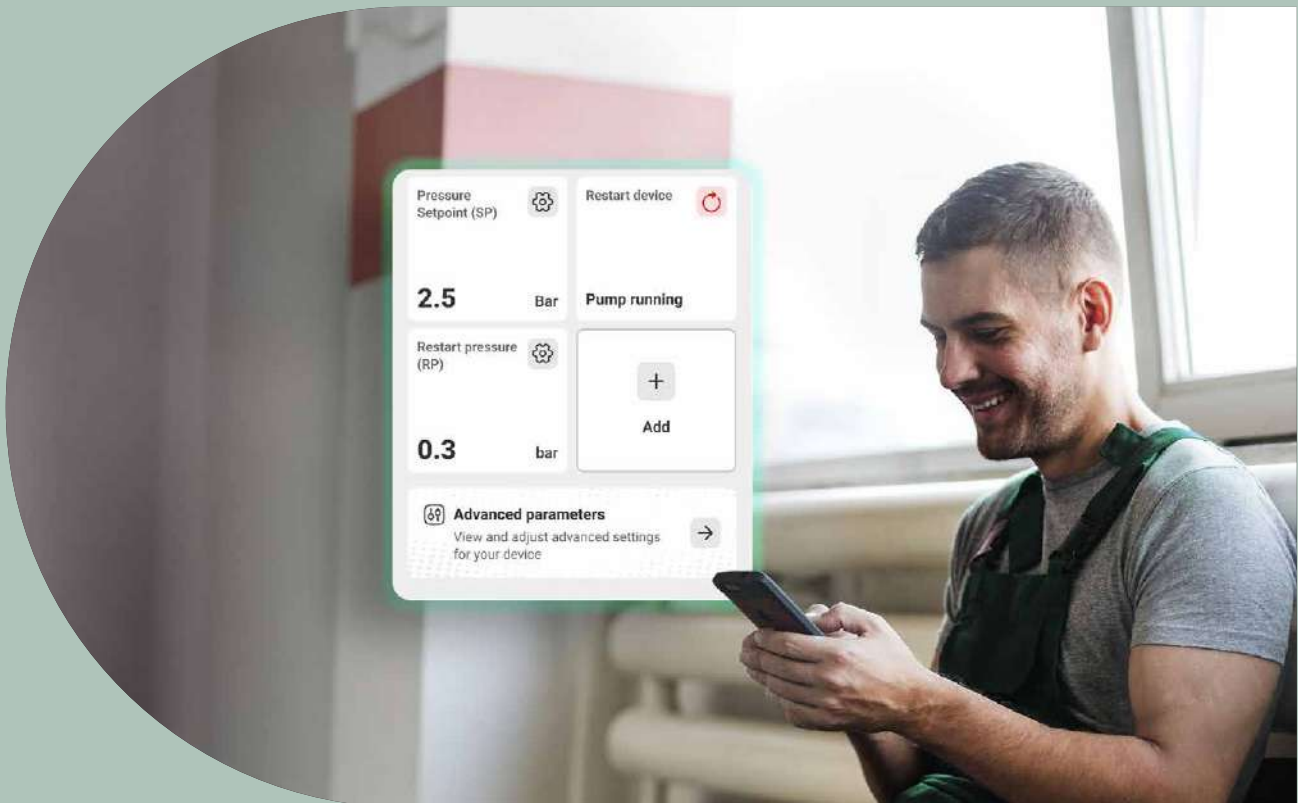
Replacing noisy pumps

Transform your system with less space and less noise. Quiet operation, modular components, and simplified maintenance optimize space and performance.

Ultimate home comfort, **made simple.**

From its compact size to its smart management, EsyBox Pop is designed to simplify every step: from installation to maintenance.

And with the new DAB H₂D app, setup has never been faster.



Quick maintenance

The modular design makes the pump easy to maintain. Components can be replaced quickly, reducing downtime and lowering service costs.



Maximum versatility

With its compact size, reduced weight, and rotatable fittings, EsyBox Pop can be installed in spaces where no other product can fit.



Small size, big performance

Compact yet technologically advanced, with minimal consumption and ultra-quiet operation. Smart connectivity ensures an optimal user experience.



Intuitive setup

Configure the pump quickly and easily via the DAB H₂D app, monitor its operation and troubleshoot remotely, saving both time and money.

Integrated technology in the smallest footprint.

Pressure sensor

Monitors water pressure in real time within the system. Ensures constant, precise regulation, avoiding fluctuations and improving end-user comfort.

Variable Frequency Drive

Automatically adjusts motor speed according to water demand. Reduces energy consumption, limits system wear, and delivers stable pressure without waste.

Rotatable fittings

Simplify installation in tight spaces and allow faster work without modifying the existing system.

Permanent magnet motor

High-efficiency, long-life electric motor. Delivers superior performance with lower energy use and reduced maintenance needs.

Temperature sensor

Monitors system and water temperature in real time, ensuring safe operation and preventing malfunctions.

Flow meter

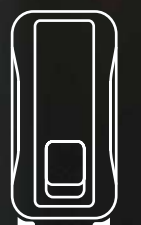
Provides accurate consumption monitoring, useful for both the user (tracking) and the installer (diagnostics and calibration).

Non-return valve

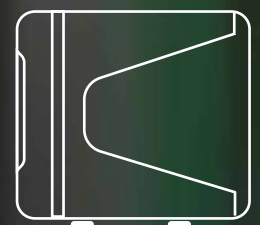
Prevents backflow and pressure issues, ensuring water always flows in the right direction while protecting the overall installation.



122 mm



225 mm



209 mm

DAB

No space limits, endless possibilities.

EsyBox Pop adapts to any environment, ensuring immediate comfort and management that is always under control.



Outdoors

Thanks to its IPX5 protection, it can be installed outdoors, remaining always under control via the app, without interfering with everyday spaces.

In the bathroom

Perfect for those who want to fully enjoy the shower with the Power Shower function or improve water pressure in the bathroom.

After renovation

To replace an old pump in limited space and time, with the advantage of quieter operation and improved energy savings.

In small spaces

EsyBox Pop fits even into the narrowest corners, providing more pressure where needed without being intrusive.

Compact and light

A pump that's easy to carry and install: for quality jobs that satisfy your customers – without invasive works or long periods with no water.



Ultra-quiet and all-in-one

EsyBox Pop arrives fully assembled, hassle-free, and without bulky or expensive extra parts. It is designed to operate quietly, without producing annoying noises, to ensure comfort and tranquility in any environment.



Certified for drinking water

EsyBox Pop comes with all the key certifications for domestic use and drinking water, in compliance with international standards.





H₂D: take full control of your water.



Compatible with EsyBox Pop, it's your ideal app.

Simple and intuitive, it provides a clear view of the systems and turns them into easily manageable setups, even remotely.



Give your customers solutions, **wherever you are.**

With EsyBox Pop's remote monitoring through the H₂D app, you can act quickly and efficiently—no more time lost on site visits or long inspections.



Save time and work more efficiently

Run diagnostics remotely, intervene only when needed, and work faster and more effectively.



Plan interventions in advance

Avoid last-minute emergencies and manage your schedule of installations and maintenance more effectively.



Monitor faults remotely

Wherever you are, you can check pump status and key system parameters. Provide consistent, reliable service, without being physically on site.



Deliver better service for happier customers

Your customers get professional, timely, and high-quality assistance. Less stress for you, more trust and satisfaction from those who choose your services.



The new solution,
**with the reliability
you've always known.**



Discover more



Address

Via Marco Polo, 14 Mestrino (PD) - Italy

Contacts

Tel: +39.049.5125000

dabpumps.com

